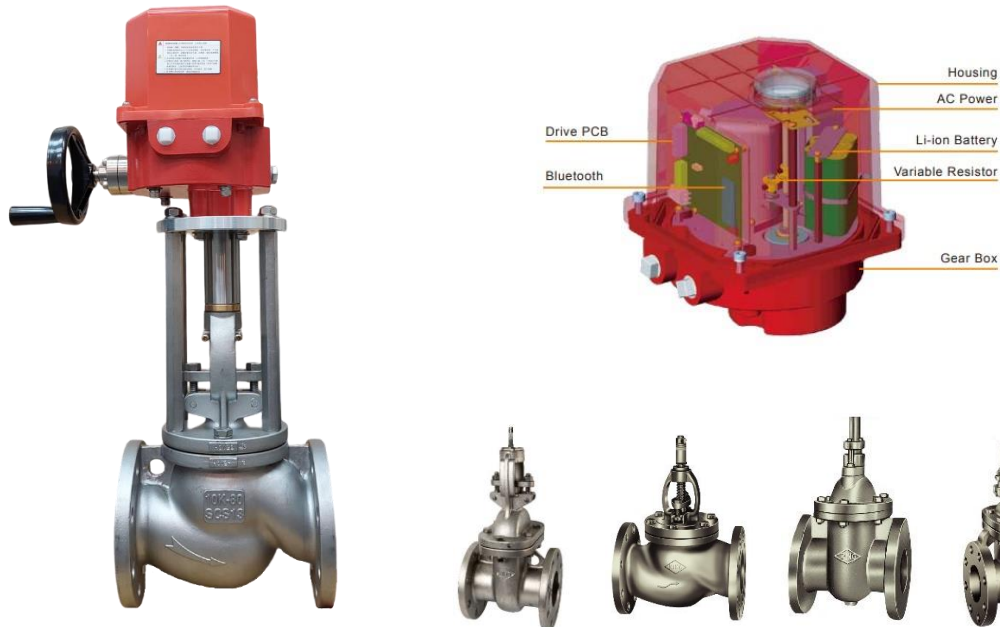


PRO UNI-D CO., LTD.

LINEAR Control Valve



Modular Design

- Plug & Play Kit easy to have additional functions when need
- AC Power Modular, Failsafe Modular and Bluetooth Modular

Bluetooth

- Available operate valve and monitor the status of actuator directly
- 10 records of abnormal status for maintenance

Li-ion Battery

(two function optional)

- Failsafe function
- Backup power

Brushless DC Motor

- High duty cycle performance

LED Light Indicator

- Easy to know the status of the position

High Duty Cycle

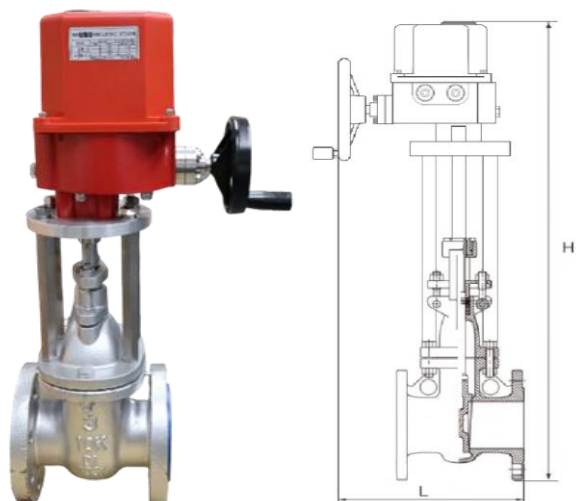
- 30% for ON-OFF function
- 75% for modulating

Multi-Voltage

- AC110V~AC220V, DC24V

Specification and Outline Drawing:

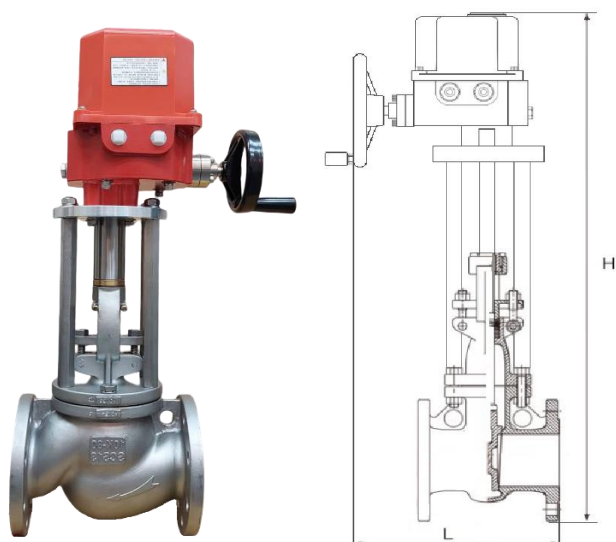
UMB-N (Non-Rising-Stem Gate Valve, Cast Iron)



Non-rising-stem gate valve, cast iron						
Size	2"	2-1/2"	3"	4"	5"	6"
L	290	295	300	315	325	335
H	600	620	660	730	820	880

Size 3"			
Voltage	AC110	AC220	DC24
Standby Current (A)	0.07	0.07	0.13
Standby Power (W)	4	4	3
No-Load Operation Current (A)	0.16	0.13	0.6
No-Load Operation Power (W)	17	17	14.4
Travel time: 60sec.			

UMB-N (Rising-Stem Globe Valve, Stainless Steel 304)

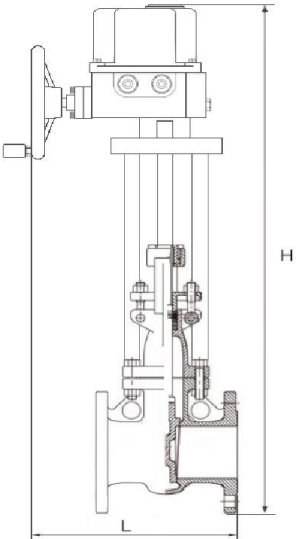


Rising-stem globe valve, stainless steel 304						
Size	2"	2-1/2"	3"	4"	5"	6"
L	305	310	320	330	340	360
H	640	660	700	770	860	920

Size 3"			
Voltage	AC110	AC220	DC24
Standby Current (A)	0.07	0.07	0.13
Standby Power (W)	4	4	3
No-Load Operation Current (A)	0.35	0.21	1.3
No-Load Operation Power (W)	35	35	31.2
Travel time: 30sec.			

Specification and Outline Drawing:

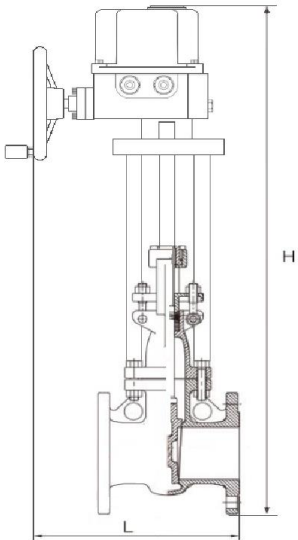
UMB-N (Rising-Stem Gate Valve Stainless Steel 304)



Rising-stem gate valve, stainless steel 304						
Size	2"	2-1/2"	3"	4"	5"	6"
L	290	295	300	315	330	335
H	680	700	800	870	960	1120

Size 3"			
Voltage	AC110	AC220	DC24
Standby Current (A)	0.07	0.07	0.13
Standby Power (W)	4	4	3
No-Load Operation Current (A)	0.22	0.16	0.8
No-Load Operation Power (W)	22	22	19.2
Travel time: 60sec.			

UMB-N (Rising-Stem Gate Valve Cast Iron)



Rising-stem gate valve, cast iron						
Size	2"	2-1/2"	3"	4"	5"	6"
L	290	295	300	315	325	335
H	680	700	790	870	1000	1160

Simple Instruction of UMB-N series actuator

1. Product Introduction

Linear valve actuator UMB-N adheres to specification of ISO5211. It's used to connect to linear valves such as global, gate valve...etc. The thrust is 11000~6000N and with mechanical position indicator green and red LED light.

2. Product Characteristics

■ Modular Design

- --Plug & Play Kit easy to have additional functions when need
- --AC Power Modular, Failsafe Modular and Bluetooth Modular

■ Multi-Voltage

- AC110~220V, DC24V

■ Voltage free signal feedback is standard

- Feedback signal for valve status (open or close), AC260V/100mA.

■ Enclosure:

IP67 waterproof and dustproof nylon enclosure that prevent damage from heat, acid, and alkali. Aluminum enclosure is optional.

■ BLDC Motor

- Brushless DC motor, insulation Class F, and available for long time operating.

■ Working Condition:

Ambient temperature: -10°C ~ +60°C

The Humidity: 30%~95%.

3. Optional function

• Bluetooth

It can operate control valve at site and monitor the status (10 records of abnormal status for maintenance and examination reference.)

• Modulating 75% duty cycle

It's available for customer to control the travel (open/close) of valve by input signal voltage 0~10VDC or 2~10VDC, and current (4~20mA) signal.

• Failsafe

Battery type, when power fail, the valve will be opened or closed to the position that preset in factory.

- Backup power
Battery type, when power fail, end user can operate the valve to the indicated position they want..
- Heater
Make the actuator inside temperature higher and dryer to prevent from the damage to the moisture, 24V/5W.

4. Product Features

- a. Current status record: Detect the current status for maintenance, when the current over 100% torque, the current status will be recorded in program (Bluetooth function).
- b. Over-loaded protection: When the loading torque or current overload, the electric actuator will be stopped operating.
- c. Electromagnetic compatibility: The circuit match EMC standard.
- d. Modular design: Power and Bluetooth modular that make assembly and maintenance easier.
- e. Double limit position:
 - (a) Motor detecting: make the valve travel position precisely.
 - (b) Mechanical limit: with restricted baffle and adjustable travel screw.
- f. Valve stuck protection: provide 1.3 times of valve torque, when valves unable to operate in few seconds, the power will be shut down.
- g. Speed control: When valve travel less than 10%, the speed will be slowed down to adjust position precisely.
- h. Mechanical lock: Motor and gear will be locked when the valve arrive the indicate position.
- i. Fail-safe: When power failure, the valve will be returned to the preset position
(open or close, 0° ~90°)
- j. Valve travel control: Precise travel setting, keep the electric actuator life time longer.
- k The control program can be renewed through the software.
- l. Signal feedback: Feedback signal for valve status (open or close), AC260V/100mA.
- m. LED indicator for on/off.

Smart Type Linear Valve Actuator UMB-N Series

Item	Specification	UMB-N
Power Supply (Optional)	DC24V	●
	AC110V~AC220V (Optional)	●
Thrust Range	1000~6000N	●
STROKE	60mm	●
Control Model (optional)	Bluetooth	●
	Modulating 4-20mA or 2~10V (Optional)	●
	Bluetooth (Optional)	●
Rated Thrust	75%	●
Duty Cycle	30%~75%	●
Fail-Safe or backup power	≥ 1 One Time (Option)	●
Ambient Temperature	$-10^{\circ}\text{C} \leq T_a \leq 60^{\circ}\text{C}$	●
IP Rating	IP67 1M 30 Min	●
	IP68 10M 72 Hour (Optional)	●
Certifications Approval	CSA139-13 / UL429-ED7	●
Voltage free signal feedback	Max 0.13 (A) (standard)	●
Heater	5W (Optional)	●

Features

- Brushless DC motor that available for long time operating.
- Motor insulation Class F.
- Electromagnetic Compatibility: match EMC certificate.
- Hand wheel is standard that for emergency use.
- Fieldbus mode are acceptable, such as Modbus-ASC II .
- Current Status Record: Detect the current status for maintenance, when the current over 100% torque, the current will be recorded in program (Bluetooth function).
- Protect Device: Over-loaded, double limit position, valve stuck, mechanical lock and speed control.
- Short speed time for option.
- Ambient Temperature: $-10 \leq T_a \leq 60^{\circ}\text{C}$ (Humidity $< 90\%$ 25°C); $-20 \leq T_a \leq 70^{\circ}\text{C}$ (Optional)
- Failsafe function is made by modular design, easy to replace.
- The standard duty cycle is S2 15minutes, for other duty cycles please contact with us.